

KAWAIIINE

100% PLANT BASED PARMESAN STYLE UMAMI SPRINKLE



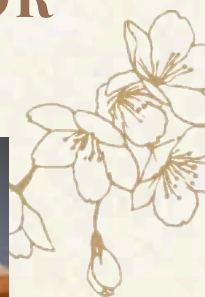
AWARDED
"TABERU JAPAN 2023"



UPCYCLING OF SAKE WITH UMAMI FLAVOR

What's in our vegan cheese?

"Parmesan cheese flavor" is made from sake lees (*sake kasu* in Japanese). Under the theme of "disseminating Japanese ingredients to the world," we chose sake lees as something attractive. There are many plant-based cheeses made from cashew nuts overseas, but by using sake lees, you can express the aroma of fermentation and the richness of the flavor.



OISHII TIME ANY TIME

[HTTPS://TOKYOBAL.CO.JP/](https://tokyobal.co.jp/)

PRODUCT OF JAPAN



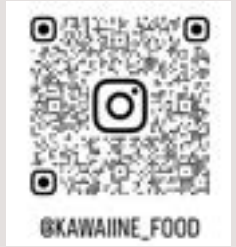
What's sake lees?

※This product is alchole free.

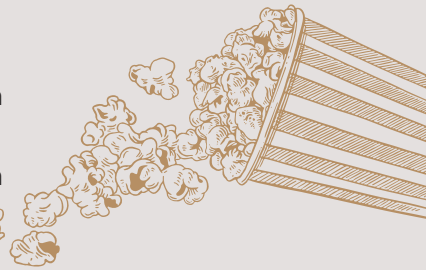
It is a by-product from sake processing which is a very popular fermented ingredient in Japan due to its health benefits. It contains resistant protein, B vitamins, dietary fiber, peptides and oligosaccharides.



See more recipe



- Just Sprinkle it on Pasta, Salad...even Pop corn!
- Boost your meal with our vegan parmesan!!
- 1 tablespoon of this product a day can provide Vitamin B12 intake, which is often deficient in vegan and vegetarian diets.
- It can be used as a daily nutritional supplement for its richness in minerals such as zinc, iron, and magnesium as well as vitamins including B vitamins and folic acid, which are important for the growth of children, and women.



Nutrition Facts

20 servings per container	
Serving size	1 tsp (5g)
Amount Per Serving	
Calories	20
% Daily Value*	
Total Fat 1g	1%
Cholesterol 0mg	0%
Sodium 60mg	3%
Total Carbohydrate 1g	0%
Dietary Fiber 0g	0%
Total Sugars 0g	
Includes 0g Added Sugars	0%
Sugar Alcohol 0g	
Protein 1g	2%
Calcium 1.5mg	0%
Iron 0.2mg	2%
Potassium 26mg	0%
Vitamin B12 1µg	42%
Folic acid 43µg	11%
Not a significant source of sat. fat, trans fat, PUFA, MUFA, or Vitamin D.	
*The % Daily Value (DV) tells you how much a nutrient in a serving of food contributes to a daily diet. 2,000 calories a day is used for general nutrition advice.	

Ingredients
Cashew nuts, sake lees,
nutritional yeast, salt

CONTAINS : CASHEW NUTS

Shelf life
1 year after production date

Storage
Normal Temperature
Keep out of direct sunlight,
high temperature, and
humidity



NT WT 100g 3.5oz
8pcs / case
Case Size mm
230 x 160 x 100



NT WT 1,000g 35.2oz
12pcs / case
Case Size
360 x 245 x 220



Ryoko Tsutsui

Our first child was born with Down syndrome. After few surgeries and doing many rehabilitations, we saw that her development is strongly connected with what she eats. Enhancing people's well being, our brand exists for the future of children and the earth where they are going to live.

Co-Founder Ryoko Tsutsui

Reviews ★★★★★

