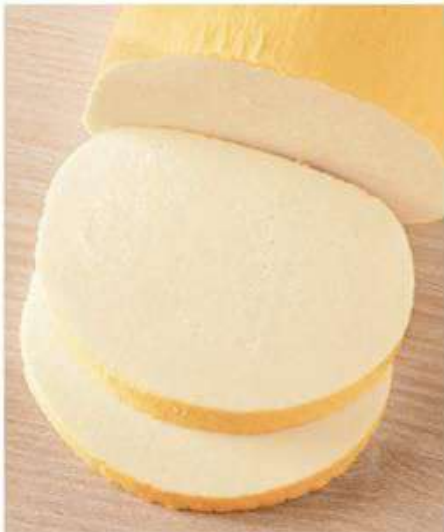


Cilindro giallo



Cilindro giallo is a semi-hard stretched-curd cheese with a compact and elastic texture and a characteristic straw-yellow color. Its elongated shape makes it distinctive and practical in the kitchen. Delicate and versatile, it can be enjoyed plain or grilled.

Primary packaging



TRAY 2pcs

about 2kg